

also a very large business in furnishing carriages and hacks. In the freight business they employ fourteen trucks and two drays, and in handling baggage they have twelve wagons. They also have ten carriages or hacks. The stable which they occupy is pronounced one of the most complete, elaborately arranged transfer barns in the West. The lower floor is occupied by the various vehicles of the company, harness room, drying room, place for washing wagons and by offices. The upper portion is used for the horse stalls, in which they now give accommodation to 107 head. It is divided off in a stall for each animal, with several box stalls for infirmity purposes. There is also a convenient place for the veterinary. All the refuse is carried to the rear of the build-

ing quite popular, and they already have four customers, one of whom uses four wagons. The company has the right (in fact, are the only people in Seattle who have it) of boarding all incoming vessels and trains and soliciting baggage, and this feature of their business has grown to very large proportions. The president of this large concern is E. C. Neufelder, president of the People's Bank, while R. J. Reekie is secretary and treasurer and looks after the active management.

THE SEATTLE HARDWARE COMPANY.

Among the big houses which have given Seattle a reputation throughout



INTERIOR MAIN STORE OF SEATTLE HARDWARE CO.

ing and from there dumped into the Sound, the waters of which rise with each succeeding tide. On the whole, it is most elaborately arranged. The Seattle Transfer Company also have two large omnibuses of their own, which they run to and from various trains and steamers. They were the first people in town to adopt rubber tires on their carriages. One of the features which they have recently added to their business is that of furnishing delivery wagons complete, including driver, to any merchant who desires the same, the payment for the service being made once a month. In this way the transfer company furnishes the entire equipment, keeps the wagons in order and stands all risk, the merchant simply paying for the service in a lump sum. It is becom-

the West as a jobbing center, the Seattle Hardware Company takes a leading place. In order to emphasize the size and importance of their establishment several illustrations are herewith reproduced, showing both their wholesale department and their retail store. The company has a capital of \$200,000 and are shipping goods all over the State of Washington, Alaska, British Columbia and into Idaho. In order to cover this territory five men are constantly upon the road, and the goods and stock handled by this well known firm finds a very wide distribution. Some idea can be formed of the enormous trade carried on when it is stated that ninety people are employed, and although established but fifteen years they now take rank with any of the big concerns doing a like busi-

ness in San Francisco, and practically are able to drive out all competition from the southern metropolis, and it will only be a question of a very short time when this firm will be able to enlarge its field of action and be selling goods direct to the various points in the Orient. The floor space occupied by them amounts to something like 50,000 square feet. Last year the increase in business was 10 per cent in excess of the year 1898, a very large showing when it is taken into con-

fully alive to the demands that are being made upon them and that they will easily and successfully be able to do the enlarged trade which it is confidently predicted will ensue by closer trade relations with our Oriental neighbors.

THE PACIFIC COAST COMPANY.

The Pacific Coast Company, which now has its general offices and head-



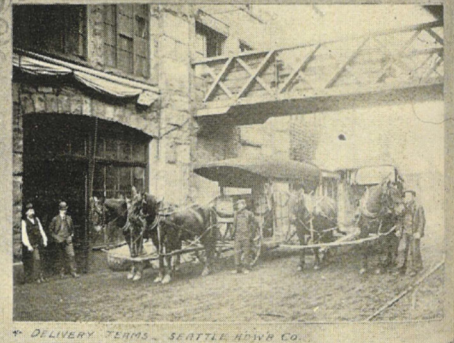
SHIP CHANDLER'S DEPT., SEATTLE HARDWARE CO.



BUILDERS SUPPLY DISPLAY ROOMS, SEATTLE HARDWARE CO.



EXTERIOR SEATTLE HARDWARE COMPANY.



DELIVERY TEAMS, SEATTLE HARDWARE CO.

SOME GENERAL VIEWS OF SEATTLE HARDWARE CO.

sideration with the fact that the year 1898 was considered a banner year. One of the notable undertakings which this company have just accomplished is the issuance of a 1100-page illustrated catalogue, which has been printed at a cost of \$12,000. Such an undertaking has never before been attempted on the Pacific Coast, and this fact lends all the more weight to the enterprise and energy displayed by the Seattle concern and shows that houses here are

quarters in this city, is one of the largest steamship companies on the Pacific Coast, and in order to get a comprehensive idea of how extensive they are, the following list of vessels which they operate is enumerated: Steamships Queen, Santa Rosa, Cottage City, State of California, City of Topeka, Coos Bay, Santa Cruz, Walla Walla, City of Pueblo, Corona, Coracao, Alki, Bonita, Gipsy, Umatilla, Senator, Orizaba, Alex. Duncan and Willamette, having a total carrying capacity of 32,-